

Year 3 UK Knowledge Organiser

Subject Specific Vocabulary

city	A large town. London is a city.
county	An area of land that is controlled by its own government.
country	A region of Britain or Ireland which has its own local government.
continent	A continuous expanse of land. There are seven continents across the world.
Northern Hemisphere	The half of the world north of the equator.
Southern Hemisphere	The half of the earth south of the equator.
Equator	An imaginary line that lies horizontally around the earth and divides the north and south hemispheres.
climate zone	An area with a distinct climate.
cacao bean	Harvested and processed to make chocolate.
temperate	Mild climate with distinct seasons.
import	Bring goods into one country from another.
rural	Places that are far away from large towns or cities
urban	Belonging to, or relating to, a town or city.



Sticky UK Knowledge

- United Kingdom is made up of 4 countries:
 - o **England** – capital city London
 - o **Scotland** – capital city Edinburgh
 - o **Wales** – capital city Cardiff
 - o **Northern Ireland** – capital city Belfast
- England is in the United Kingdom which is on the continent of Europe.
- York is in North Yorkshire, which is a county in the country of England. Home to Rowntree's and Terry's chocolate.
- Birmingham is in the West Midlands, which is an English county. It is home to Cadbury's chocolate.
- Bristol is in Somerset, which is an English county. It is home to Fry's chocolate.
- Chocolate originated in the continent of North America in the country of Mexico.
- We live in a Temperate climate. Cacao beans grow in a Tropical climate.
- Cacao beans are imported to the UK.

Physical Features of the UK



River Severn



Ben Nevis



Lake District



White Cliffs of Dover



Land's End



The Needles

Landmarks of the UK



Canterbury Cathedral



Stonehenge



Angel of the North



Clifton Suspension Bridge



Roman Baths

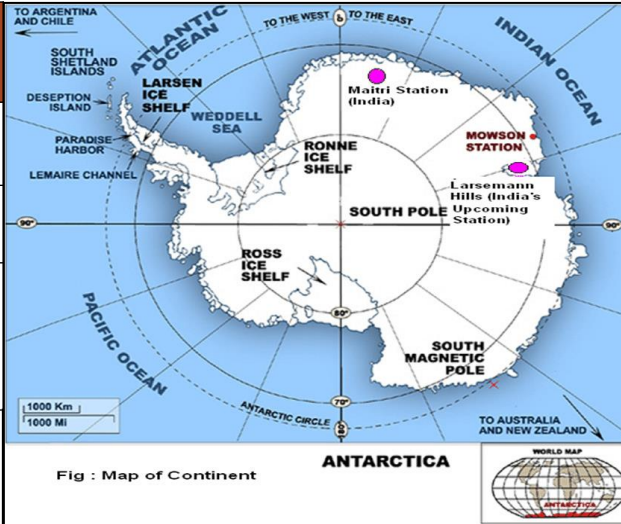


Edinburgh Castle

Year 3 Antarctica Knowledge Organiser

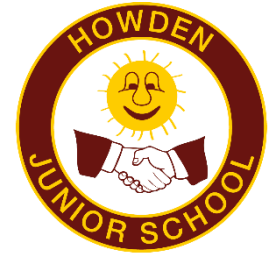
Subject Specific Vocabulary

glacier	A river or large mass of ice formed by packed-down snow.
crevasse	A deep crack in a glacier.
iceberg	A large mass of ice that has broken away from a glacier and is floating in the ocean.
ice shelf	A floating sheet of ice permanently attached to a land mass.
blubber	A layer of fat under the skin of seals and penguins.
ice sheet	A layer of ice covering a large piece of land for a long period of time.
uncharted	Not shown on any map.
frostbite	A condition caused by extreme cold which destroys parts of the body, eg ears, fingers, toes, nose.
South Pole	The southern end of the earth's axis.
floe	A sheet of floating ice.
sub Antarctic	A region just outside the Antarctic Circle.
Antarctic Circle	A line that circles the earth near the South Pole. All the land between the Antarctic Circle and the South Pole is Antarctica.



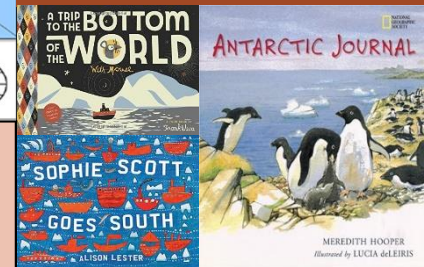
Sticky knowledge about Antarctica

- Antarctica is located at the South Pole and is surrounded by the Southern Ocean.
- Antarctica is the fifth largest continent based on its size, but it is the smallest in population.
- It is the driest and oldest continent on earth.
- Humans don't permanently live in Antarctica, but several thousand people live there temporarily and work at various research facilities found on the continent.
- While Antarctica features harsh living conditions, a few plants and animals have adapted to survive and call the icy continent home.

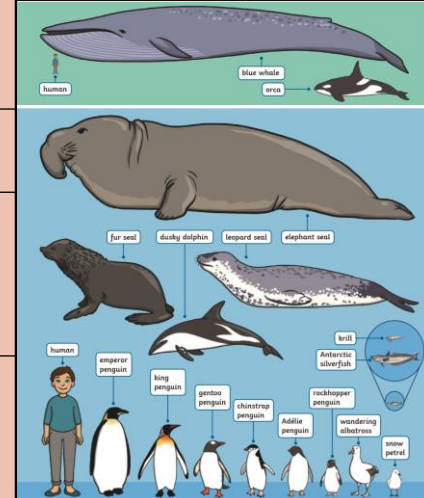


Caring and Sharing

Exciting Books



Animals of Antarctica



Year 3 Asia Knowledge Organiser (China)

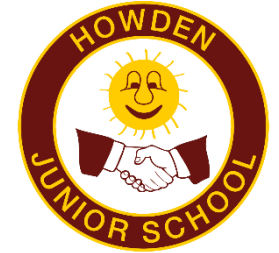
Subject Specific Vocabulary

landmarks	Important objects or features of the landscape.
Himalayas	A mountain range which separates India from China and includes the world's tallest mountain – Mount Everest.
Gobi Desert	A desert which is in the rain shadow of the Himalaya Mountains.
Yellow River	The Yellow River is the second longest river in China and sixth longest in the world.
climate	The average weather conditions in a certain place for the past 30 or so years.
Mandarin	The language spoken in China.
tropical	Hot and humid weather conditions.
monsoon	Strong winds which cause wet and dry seasons throughout the Tropics.
population	The number of people who live in a given place.
paddy	A field where rice is grown.
agriculture	Farming



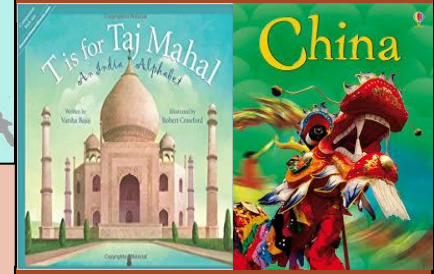
Sticky knowledge about China

- Asia is in the Northern Hemisphere and it is the largest continent on earth.
- China has a population which is higher than any other country in Asia and the world.
- The longest river in Asia is the Yangtze River in China which is the third longest river in the world.
- The only man-made structure that is visible from outer space is the Great Wall of China, which is found in Asia.
- The capital city of China is Beijing. The largest city is Shanghai.

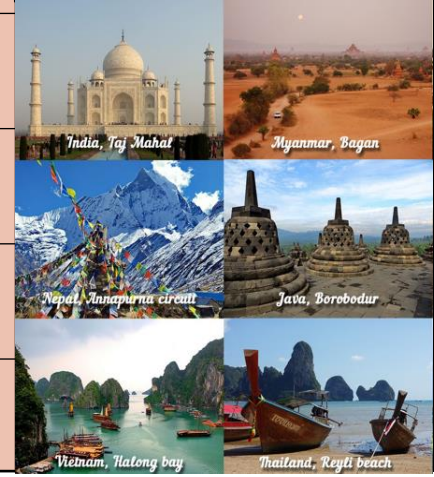


Caring and Sharing

Exciting Books



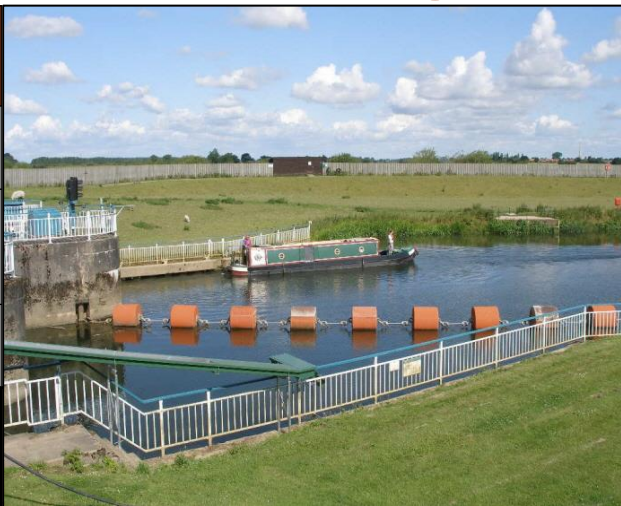
Postcards from Asia



Year 3 Local Area Knowledge Organiser

Subject Specific Vocabulary

barrage	A structure built across a river to control the flow of water.
river	A large amount of fresh water flowing continuously in a long line across the land.
minster	A large or important church that was built as part of a monastery.
human features	Something that is built by humans and would not have existed in nature without humans.
church	A building used for public Christian worship.
map	A drawing of a particular area showing its main features as they would appear if you looked at them from above.
compass	An instrument that you use for finding directions.
physical features	Something that exists naturally in the environment without the help of humans.
fieldwork	The gathering of information in a natural environment
village (rural)	A group of houses with a church in a rural area.
town (urban)	A place with many streets, houses and other buildings such as shops.
settlement	A place where people have come to live and built homes.



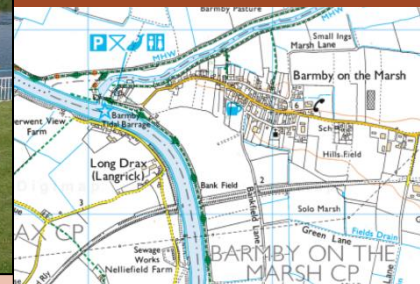
Sticky knowledge about Barmby on the Marsh

- Barmby on the Marsh is a village in the East Riding of Yorkshire, 4 miles west of Howden.
- Physical features in Barmby on the Marsh are the River Ouse and the River Derwent.
- Human features in Barmby on the Marsh are a barrage, a church, a school, a pub and a dismantled railway line.
- The barrage is located where the River Ouse joins the River Derwent.
- A **village** is small but may have houses, a primary school, a few shops, a Post Office and a village hall.
- A **town** is larger than a village, with lots of houses, primary and secondary schools, as well as sometimes having a railway station and shops.

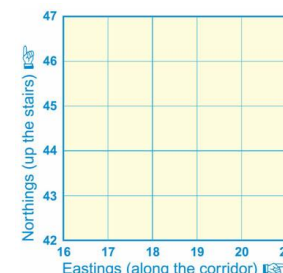


Caring and Sharing

OS Map



Grid References



Compass Points

